

# Impact Framework

## How we measure impact

Quadrature Climate Foundation (QCF) is committed to creating a climate-resilient future for the world's most vulnerable people. Our **Impact Framework**, grounded in our Theory of Change, enables us to understand how our work contributes to this goal. Central to our Impact Framework is a focus on systems change. Climate change is a complex, multi-faceted challenge, and QCF's interventions are one small part of the collective effort needed across scales, disciplines, institutions and organisations.

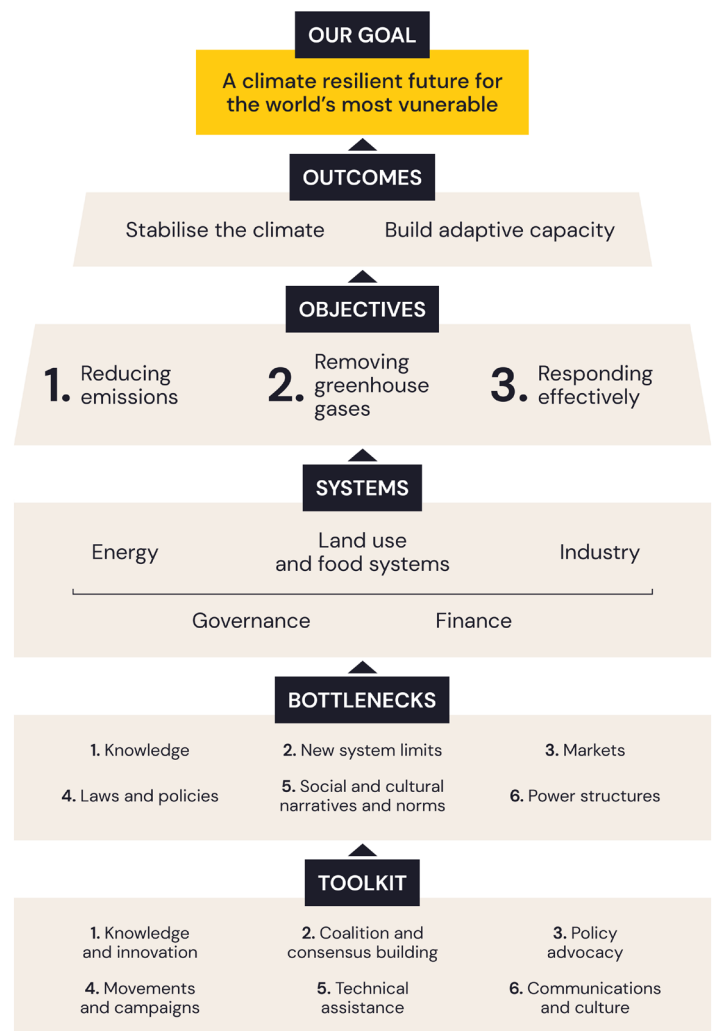
Our **Impact Framework** has the twin goals of enabling us to track the contribution of our programmes to climate solutions that reduce and remove emissions and support vulnerable people to respond to climate risks, and building a field-wide research agenda to deepen our understanding of the system transformations required. We tailor our approach to collecting data based on each partner's capacity, ensuring our reporting requirements reflect the complexity of the project and the specific needs of the stakeholders served by our programmes.

## What is QCF's Theory of Change?

In designing our **Impact Framework**, we began with our Theory of Change. This maps the pathways to impact—showing how interventions in one part of the system can lead to outcomes in another. This strategic approach guides our actions, helping us drive meaningful climate solutions that influence systems, policies, and practices globally.

### Our Theory of Change

- **Goal** Our vision is a climate-resilient future for the world's most vulnerable people.
- **At the outcomes level** To achieve this vision, we must both stabilise the climate and support the most vulnerable groups to respond to the worst impacts of climate change.
- **At the objectives level** We focus on three key pillars of work: reducing greenhouse gas emissions, removing greenhouse gases, and responding effectively to climate impacts. Each of these plays a vital role in both mitigating climate risk and building resilience among those most affected.
- **At the systems level** Achieving these objectives requires systemic change, and there are five key systems critical for addressing emissions and vulnerability: energy; land use and food systems; industry; governance; and finance. Each of these systems must transition to a low-carbon and climate-resilient model to meet the scale of the climate challenge.
- **At the operations level** While transitioning these systems, we face significant bottlenecks that hinder progress. These bottlenecks include data gaps, system limits, insufficient market development, restrictive laws and policies, and entrenched social and cultural norms. Often, multiple bottlenecks intersect, with power structures compounding the barriers to progress.



To overcome these challenges, QCF employs a comprehensive toolkit designed to address these bottlenecks and unlock systemic change. This includes fostering knowledge and innovation, building coalitions and consensus, advocating for effective policies, running movements and campaigns, offering training and technical assistance, and addressing social and cultural norms. Together, these tools create a 'perfect storm' strategy that enables systems to shift towards more sustainable, resilient models.

## From Theory of Change to Impact Framework

Our **Impact Framework** translates the Theory of Change into a practical approach for understanding and evaluating contribution. It informs our learning and evidence-based decision-making, ensuring that both our efforts—and those of our partners—can adapt and respond effectively as circumstances evolve.

### What do we track, how do we track it, and what does success look like?

#### 1. Outcomes-level aim: Build climate resilience by stabilising the climate and reducing vulnerability.

**What we track:** Global climate indicators, including emissions trends, climate events and average rolling temperatures, and the number of people globally exposed to severe climate impacts.

**Why:** To establish a research agenda and help us better understand our context and the drivers of these outcomes. This helps inform and situate our work.

**How:** Where available, we use existing global datasets and commission and publish research.

**What success looks like:** Achieving net zero emissions and lifting two billion people out of vulnerability by 2050.

#### 2. Objectives-level aim: Reduce, remove, and respond.

**What we track:** Where possible and appropriate, we track our contributions to metrics around emissions reductions, emissions removals, and the number of vulnerable people reached by our programmes. Acknowledging the complexity of systems change, which means these metrics are not always relevant at programme level, we apply a common-sense approach and assess overall contribution at a portfolio level.

**Why:** To assess and understand our contribution to impact across our grant portfolio.

**How:** We use data from our partners where available, combined with portfolio-level analysis based on field-level data.

**What success looks like:** Programme targets are defined by our partners and then organised under the three objectives. Timescales vary—some projects deliver short-term wins, immediately reaching vulnerable communities, while transformational changes take longer.

#### 3. Systems-level aim: Increase system resilience by either tackling emissions or addressing vulnerability.

**What we track:** We follow systems-level change from two angles: first, an external research agenda, investing in analysis of the global trends in the systems change we seek to achieve. Second, an internal evaluation agenda, to understand how our programmes contribute to desired system shifts.

**Why:** Externally, to understand the drivers of systemic change, and internally, to evaluate our impact on those systems.

**How:** We commission and publish research at a global scale while gathering programme-level data to assess QCF's contributions.

**What success looks like:** Every system delivering low-carbon, climate-resilient outcomes, drawing on global goals where these exist.

#### 4. Operations-level aim: Addressing the bottlenecks to achieving systems change.

**What we track:** Progress against key milestones tied to specific system bottlenecks, as defined by our partners.

**Why:** To understand how programmes are progressing, so we can provide tailored support.

**How:** Partners identify high-level programme indicators during the grant application process. These indicators are tied to one or more 'systems change bottleneck' identified during the programme design. We gather data through conversations or written feedback to reflect annually on progress. QCF performs additional analysis to identify portfolio-wide insights, which can inform future strategies.

**What success looks like:** Using insights from programme progress to provide real-time, tailored support to partners and inform and refine future plans and partnerships.

Our ambition is that our Impact Framework provides a structured approach to data collection across our goals and our portfolio, to support QCF and our partners to drive meaningful, long-term change for the world's most vulnerable people.